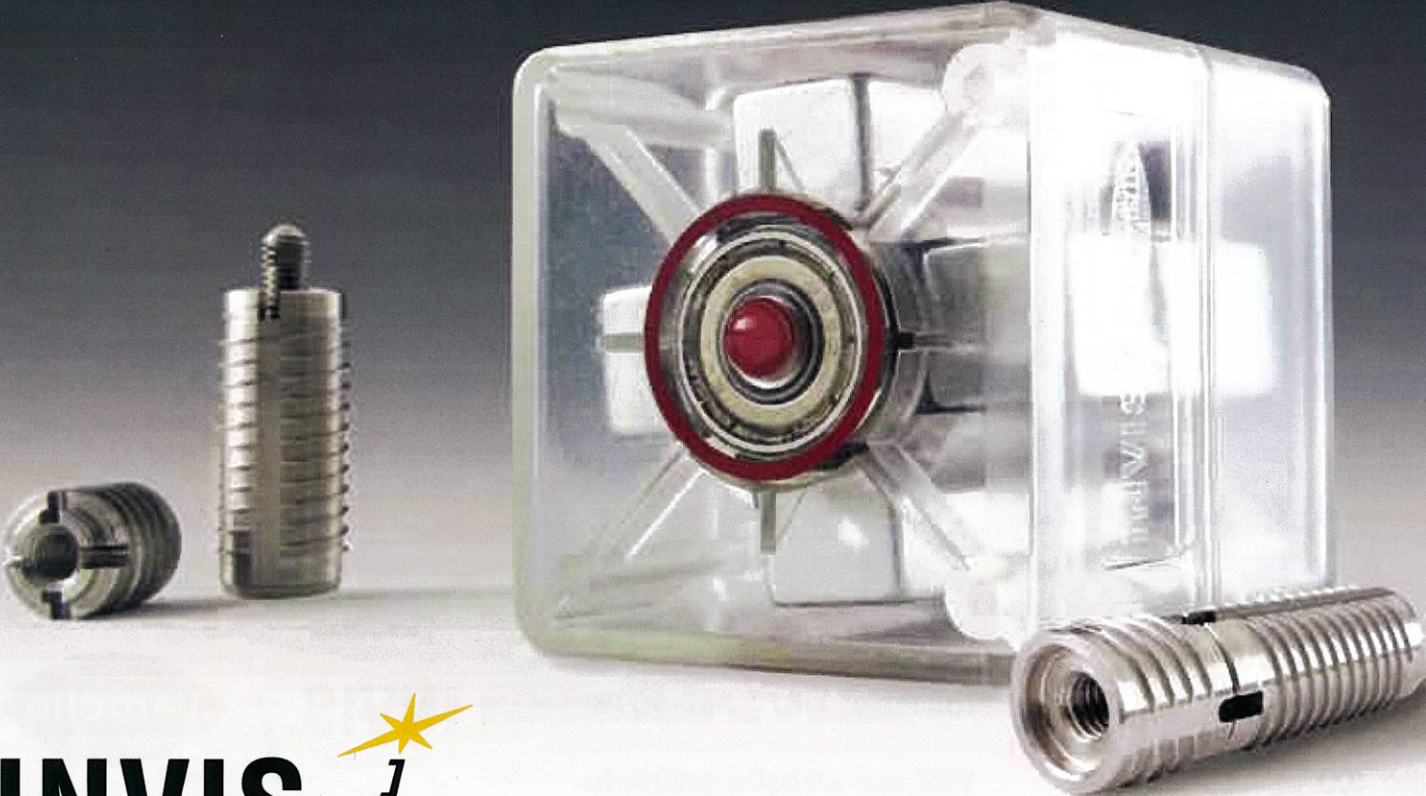


INVIS[®] Mx2

The Next Generation of Invisible Detachable Joiners



How Invis® Works

- The MiniMag Mx2 is an adaptor that attaches to any standard drill with 1200–1500RPM.
- The rotating magnetic field of the MiniMag Mx2 drives the joining element just as one cogwheel drives the other.
- The screw within the joining element threads itself into the inside thread of the stud – driven by the contact-free magnetic field.
- To open the connection, simply reverse the direction of the drill.



The rotating magnetic field of the Minimag Mx2 drives the joining element

Invis® Mx2 Starter Kit

Everything you need to start!

The Kit includes:

- The new Minimag Mx2,
- Invis MX2 insertion bit, 12mm drill,
- Rasto drill jig with bushings, stops & pins,
- 20 pcs InvisMx2 connectors (14mm female and 37mm male pieces)
- Everything nicely stored in a systainer box.

SKU. 6100300



Invisible and Detachable

Quick. Cost Effective. Compelling.

Connections "invisible as if glued, versatile as if screwed." Lamello has kept true to its essence. But using Invis has never been easier, faster or more cost effective than with the new Invis Mx.

This new and improved generation is geared towards more industrial applications, making Invis

- easier,
- quicker, and
- stronger

Universal 12mm Invis Mx2 joiners work perfectly in any wood, aluminum, composite or other non-ferrous material with a thickness of 3/4" and up.

Contact Information:

Invis (North America), Inc.
300 Spectrum Center Drive
Suite 400
Irvine, California 92618
Tel. / Fax. (877) 867-9019
www.swissinvis.com
info@swissinvis.com

To Order:

Toll Free: 1-877-867-9019

Visit our website online to
view projects and videos

www.SWISSINVIS.com



Invis is protected by international and US patent laws.
Invis is a product of Switzerland and manufactured by
Lamello AG, Switzerland.
©2016 Invis (North America), Inc. All rights reserved.