

Lamello



INVIS[®] Mx



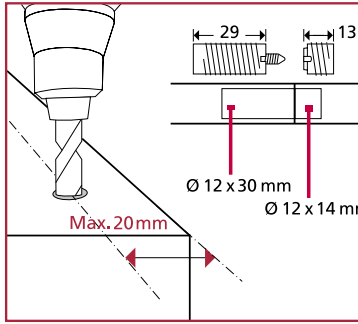
The Next Generation of Invisible Detachable Joiners



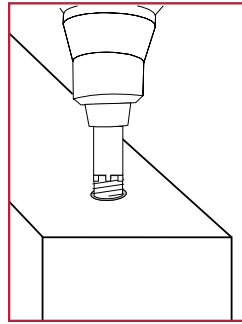
INVIS[®] 

How Invis® Mx Works

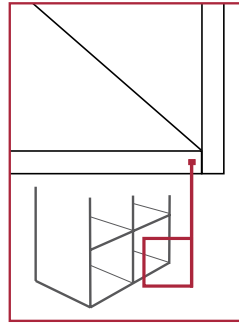
- The MiniMag Mx is an adaptor that attaches to any standard drill with 1200–1500RPM.
- The rotating magnetic field of the MiniMag Mx drives the joining element just as one cogwheel drives the other.
- The screw within the joining element threads itself into the inside thread of the stud – driven by the contact-free magnetic field.
- To open the connection, simply reverse the direction of the drill.



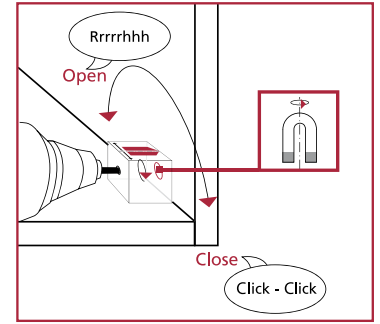
Drill



Insert



Assemble



Attach

Drilling the holes

The holes for InvisMx can be drilled with a stationary drill or with CNC machines. When hand drilling, we recommend the use of a drill jig.

The Rasto Drill Jig from Lamello is a universal alignment jig for 5mm, 8mm, 10mm and 12mm holes.

Rasto Drill Jig

The multifunctional drill jig enables precise and economic drilling – without measuring or marking. It is useful for various workpiece shapes and is therefore ideal for Invis and many other applications.

The first hole is drilled by positioning the Rasto plate and bushing on the workpiece with three positioning pins. The drill bushing is then screwed into the same hole on the other side of the plate. The hole on the opposing workpiece is drilled with the same setting of the pins. The pins ensure that the drill jig sits on the second work-piece precisely as it had on the first, resulting in perfectly aligned holes.

The advantages:

- Quick and precise hole drilling
- Useful for all workpiece shapes
- No measuring or marking required
- Ideal for exact drilling of Invis joining elements and studs

FAQ about Invis Mx

- "When is the Invis joint closed?"
As soon as the joining element sound has changed into a continuous knocking sound.
- "Can I tighten the joint too much?"
No. The longer the connection is closed, the greater the clamping force on the joint will be and therefore the longer it will take to open again.
- "When is the Invis joint open?"
As soon as the joining element sound has changed into a continuous hissing sound.
- "How do I find the (invisible) connection if I want to take the workpiece apart again?"
Spin the MiniMagMx and run it along the joint until the joining element beneath is at its loudest.
- "Does the connection open in case of vibration?"
No. As long as the connection was properly tightened, vibrations will not open it.
- "Can the connection open due to another magnet in the vicinity?"
No. The connection is mechanically locked tight. It can only open if a rotating magnetic field has the correct strength, the correct rotation speed and position, Only the Invis MiniMag can open and close the Invis joint properly.



Invis® Mx – The New Generation

Quick. Cost effective. Compelling.

Connections “invisible as if glued, versatile as if screwed.” Invis has kept true to its essence. But using Invis has never been easier, faster or more cost effective than with the new Invis Mx.

This new and improved generation is geared towards more industrial applications, making Invis even

- easier,
- quicker, and
- stronger



The rotating magnetic field of the Minimag Mx drives the joining element

Easy



Visible rotation in the Minimag Mx indicates if the connection is opening or closing.



The red arrow displays the correct positioning of the cube on the work piece.



Increased tolerance enables simplified handling during installing.

Efficient



Better handling—the double-threaded elements allow the installation of Mx parts straight and quickly.



No drill or bit changes are required. The same screw bit is used for the element and the stud (male and female).



The joining element and the stud can be mounted flush for easy stacking and for a slide-in assembly.

Powerful



A 50% larger magnet results in powerful clamping of the joint.



A 30mm long metal thread allows strong anchors - very useful in particleboard.



Flexible shaft on the Mini-MagMx: ideal angle drive, Now Invis can reach the smallest corners.

Invis® Mx Starter Kit

Everything you need to start!
The Kit includes the new Minimag Mx, two bits, a flexible shaft to access any corner. Includes 30 pcs InvisMx connectors.

SKU. 6100201

Invis® Mx Connectors (Joining Elements) and Installation Tools

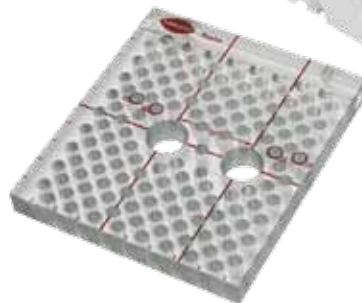
Components / part numbers	
<ul style="list-style-type: none">Minimag incl. Insertion tool SKU. No. 6100200	
<ul style="list-style-type: none">Invis Mx joiner set SKU No. 6012200 (10 pcs)	
<ul style="list-style-type: none">Invis Mx joining element SKU. No. 6012207 (10 pcs)	
<ul style="list-style-type: none">Invis Mx stud 14 mm / 30 mm SKU. No. 6012202 / 6012209	
<ul style="list-style-type: none">Invis Mx centerwall-stud up to 30 mm, SKU. No. 6012208	
<ul style="list-style-type: none">Insertion tool for InvisMx SKU. No. 6112205	
<ul style="list-style-type: none">Flexible shaft for MinimagMx SKU. No. 6100204	



Rasto Drill Kit

Includes a strong plastic jig, drills and bushings sizes 5, 8, 10 and 12 mm. Perfect for doweling.

SKU 126001



Contact Information:
Invis (North America), Inc.
8001 Irvine Center Drive
Suite 400
Irvine, California 92618
Tel. / Fax. (877) 867-9019
www.swissinvis.com
info@swissinvis.com

To Order:
Toll Free: 1-877-867-9019
Online: www.SWISSINVIS.com



Invis is protected by international and US patent laws.
Invis is a product of Switzerland and manufactured by Lamello AG, Switzerland.
©2010 Invis (North America), Inc. All rights reserved.